

PENNOCK PRESERVE PUD, SUBPHASE 1

BEING A PARCEL OF LAND LYING IN
SECTION 28, TOWNSHIP 40 SOUTH, RANGE 42 EAST
MARTIN COUNTY, FLORIDA

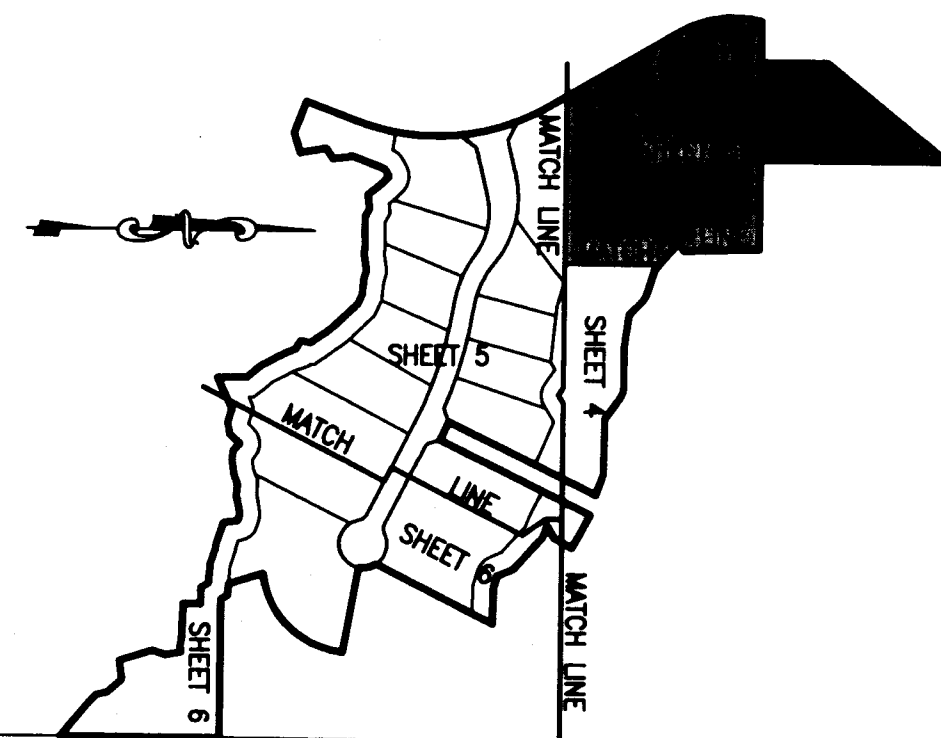
SHEET 3 OF 6

WEST LINE OF THE EAST HALF SECTION 28

FND. 4X4 CONC. MONUMENT MTH KEITH & SCHNARS
P.C.P. AND ALSO FL STAMPEL ON MONUMENT, AT THE N
1/4 CORNER OF SECTION 28. (DOCUMENT NO. 10781)

BROKEN SCALE

PH BK 17 PG 27



SHEET INDEX
NTS

PREPARED IN THE OFFICE OF:
CULPEPPER & TERPENING, INC.
2880 SOUTH 25th STREET
FORT PIERCE, FLORIDA 34981
CERTIFICATION NO. LB 4286
MICHAEL T. KOLODZIEJCZYK
PROFESSIONAL SURVEYOR AND MAPPER
FLORIDA CERTIFICATE NO. 3864

PARCEL BOUNDARY

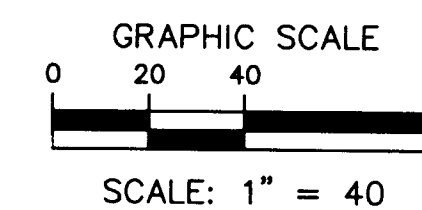
LEGEND:

- | | |
|----------------------------------|--|
| AC. = ACRE | P.B. = PLAT BOOK |
| (C) = CALCULATED DATA | (P) = PLAT DATA |
| CL = CENTERLINE | P.C. = POINT OF CURVATURE |
| C = CENTERLINE | P.D.E. = PRIVATE DRAINAGE EASEMENT |
| CB = CHORD BEARING | PG. = PAGE |
| CD = CHORD DISTANCE | P.C.C. = POINT OF COMPOUND CURVATURE |
| Δ = DELTA ANGLE | P.R.C. = POINT OF REVERSE CURVATURE |
| D.E. = DRAINAGE EASEMENT | PRM = PERMANENT REFERENCE MONUMENT |
| ESMT. = EASEMENT | PCP = PERMANENT CONTROL POINT |
| FND. = FOUND | P.T. = POINT OF TANGENCY |
| I.E.E. = INGRESS EGRESS EASEMENT | P.E.E. = PERMANENT EMBANKMENT EASEMENT |
| IR/C = IRON ROD AND CAP | R = RADIUS |
| L = ARC LENGTH | R/W = RIGHT-OF-WAY |
| L.B. = LICENSED BUSINESS | (R) = RADIAL LINE |
| L.E. = LANDSCAPE EASEMENT | SEC. = SECTION |
| L.S.E. = LIFT STATION EASEMENT | U.E. = UTILITY EASEMENT |
| (M) = MEASURED DATA | ☒ = 1/4 SECTION CORNER |
| (NR) = NON RADIAL LINE | ☒ = SECTION CORNER |
| N.T.S. = NOT TO SCALE | ☒ = CONC. MON. PRM LB. 7344 |
| O.R.B. = OFFICIAL RECORDS BOOK | ☒ = CONC. MON. PRM LB. 4286 |
| P.O.B. = POINT OF BEGINNING | ☒ = 5/8" IR/C, LB 4286 |
| P.O.C. = POINT OF COMMENCEMENT | ☒ = PCP, NAIL/WASHER, LB 4286 |
| | ☒ (33) = LOT NUMBER PER FINAL APPROVED SITE PLAN (TYPICAL) |

DAVECO ENTERPRISES, INC, AND
ACCESS ENTERPRISES, LLC
O.R.B. 1806, PG. 1383

PARCEL BOUNDARY

PARCEL BOUNDARY



TOTAL NORTH LINE OF NE 1/4 SECTION 28 ... N90°56'00"E 2650.33'

